

# ENOS long-term archiving of data: UK CCS Research Centre Data and Information Archive

13 December 2017

Maxine Akhurst and Mary Mowat

# Long-term archiving of data from ENOS: UKCCSRC Data and Information Archive

Holds digital data outputs generated by CCS projects that are:

- UK CCS Research Centre funded
- Engineering & Physical Sciences Research Council funded
- Volunteer and legacy projects
- Links to other CCS datasets

Archives data and information for the **long term**, by project

Access to and reuse of data for collaboration and citation

Freely available to all (after an agreed embargo period, if required)

Search and download by the enquirer

# ENOS commitment to open data access & archiving

## Obligation in the ENOS Grant Agreement to:

- Disseminate results
- Public disclosure as soon as possible



## Commitment to:

- Provide open access to as much data and supporting information as possible for scientific research
- Subject to embargo for publication or terms in the ENOS 'exploitation' plan
- Mostly data from ENOS sites (Hontomin, GTB and Sulcis Fault laboratories)
- Long-term access to project deliverables

ENOS data archive and access in the existing **UK CCS Research Centre data archive**

## **Provision of archive**

- Set up of archive to recognised data management standards
- Web interface to archive
- Streamlined archiving process – making as easy as possible

## **Support of users**

- Initial contact with project investigators
- Online provision of guidance to data depositors
- Guidance to prepare and check metadata

## **Maintenance of the archive**

- Keeping up-to-date with latest data management and web delivery developments
- Online access and submission of metadata and data

# What data should be archived?

‘what data does the archive expect to keep and make available’?

## Data that is:

- long-term interest with potential for re-use
- underpins publications
- validates research findings
- is worth keeping

## Importantly

- validity of the published research findings are testable
- DOI can be issued so data can be cited

# What about restricted/confidential data?

The default position is data should be **open**

If any restrictions

- Must be valid/reasonable
- Metadata - including a statement explaining restriction
- Data can be held in **embargo** for a specified period

Examples of data which could be withheld –


- Confidential information
- External industry data
- Commercial interest


**Agree from outset/during project - don't wait until end!**

# Archive web access [www.bgs.ac.uk/ukccs](http://www.bgs.ac.uk/ukccs)



Home **Data** How to submit data Upload data FAQs Contact us

 **UKCCS** RESEARCH CENTRE DATA AND INFORMATION ARCHIVE



## Data search


This search allows you to discover data that has been archived by the UKCCSRC Data and Information Archive.  
You can also [view all projects](#).

Simple search **Advanced search**

Text search


### Search results

Results will be displayed here

 **British Geological Survey**  
NATURAL ENVIRONMENT RESEARCH COUNCIL

[Contact us](#) [Terms of use](#) [Privacy](#)

Questions, suggestions or comments regarding the contents of this site should be directed to [Dr Maxine Akhurst](#).

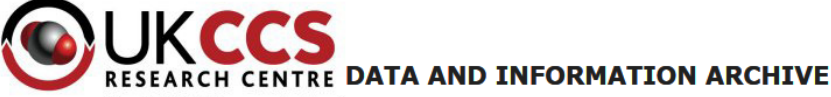
Supported by  **EPSRC**  
Pioneering research and skills

© 2017. This site is hosted by the British Geological Survey but responsibility for the content of the site lies with the UK Carbon Capture and Storage Research Centre not with the British Geological Survey.


- Archive information
- Submission guidelines
- Upload Data
- Search and browse tools
- Access to data by project
- Recognised data repository

# Depositing data in the archive

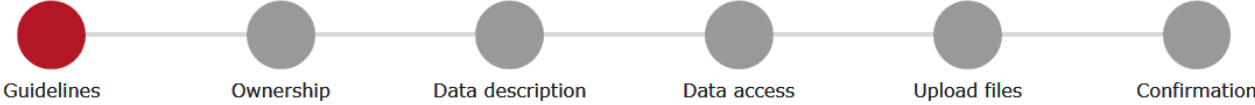
Home Data How to submit data Upload data FAQs Contact us



UKCCS  
RESEARCH CENTRE DATA AND INFORMATION ARCHIVE



## UKCCSRC Digital Data Deposit Application



Guidelines Ownership Data description Data access Upload files Confirmation

This data deposit application enables you to deposit digital data with the UK Carbon Capture and Storage Research Centre (UKCCSRC) Data and Information Archive. The archive provides professional, long-term management of UK Carbon Capture and Storage (CCS) data. It is recommended that you review the UKCCSRC data deposition guidelines before you begin this process.

### How to use the UKCCSRC Data Deposit Application

This process can be completed in more than one session, using the 'Save for Later' option. To ensure the deposit doesn't take up too much of your time, it is advised that you prepare the following:

- You must be the owner, or have permission from the owner to deposit the data
- A title and description of the data that you are depositing
- Summary of Methodology (lineage) used to generate or collect the data
- Keywords that help describe the data and would facilitate searching
- Date range during which the data was collected
- An idea of the geographical extent of the data (if this is applicable)
- Your contact details
- Any access or use restrictions on the data
- Have your digital files ready to upload
- If your data is generated as a result of a UKCCSRC, EPSRC or NERC funded grant you will also require the grant number

- Upload data easily
- Plus metadata
- Data can also be submitted by other methods
- Ask us at:

[ukccsrc\\_data@bgs.ac.uk](mailto:ukccsrc_data@bgs.ac.uk)



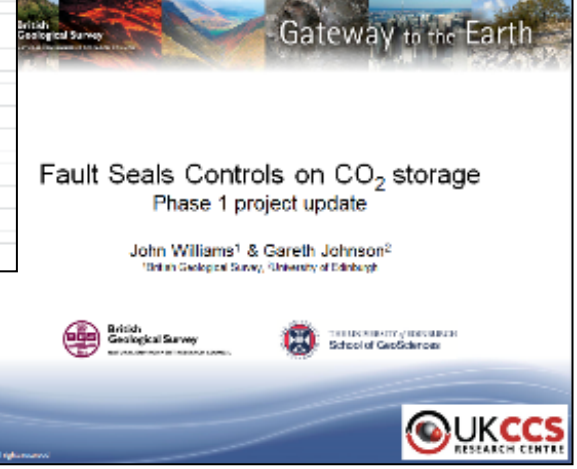
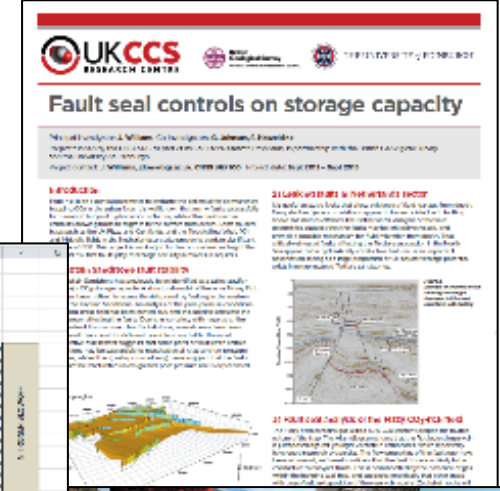
# Data and information lodged in the archive

## Examples of CCS project outputs (open access or embargo):

- Field data
- Interpreted data
- Model data
- Source code
- Reports
- Presentations
- Posters
- Images
- Educational materials

WP leaders should discuss with WP participants and site owners

Well Name	Well ID	Well Type	Well Status	Well Depth	Well Completion	Well Production	Well Injection	Well Location	Well Coordinates	Well Dimensions	Well Materials	Well Notes
1.01	1.01	Open	Active	1000	1000	1000	1000	1.01	1.01	1.01	1.01	1.01
1.02	1.02	Open	Active	1000	1000	1000	1000	1.02	1.02	1.02	1.02	1.02
1.03	1.03	Open	Active	1000	1000	1000	1000	1.03	1.03	1.03	1.03	1.03



Useful information, not solely data files